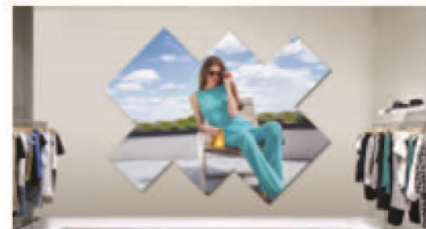


Video Wall HI-49L35E5K

KEY FEATURES

- High-end splicing display panel
- Support multiple interface ports
- Optimized color & Natural tones
- Intelligent cooling & heating system
- Support plug-play & Upgrade via USB



	Model	49L35E5K
Display	Screen size	49
	Plane Frame Joint	3.5mm
	LCD Brand	LG
	Brightness	500 nits
	Resolution	1920 x1080(pixels)
	Contrast Ratio	1300:1 (typ.)
	Back-Light	D-LED
	Refreshing Frequency	60 Hz
	Viewing Angle	178°(H) / 178°(V)
	Response Time	8ms(typ.)
	Life Time	50,000 hrs(min.)
	Display Colors	1.07B(10bit)
	Color Saturation	0,72
Interface	Solution	3458-K6C
	HDMI IN	x1HDMI2.0, (Max Resolution:3840x2160@60Hz)
		x1HDMI1.4, (Max Resolution:1920x1080@60Hz)
	DP OUT	x1DP1.2, (Max Resolution:3840x2160@30Hz)
	DP IN	x1DP1.2, (Max Resolution:3840x2160@30Hz)
	DVI-D IN	x1DVI-D, (Max Resolution:1920x1080@60Hz)
	DVI-D OUT	x1DVI-D, (Max Resolution:1920x1080@60Hz)
	VGA	x1DVI-D, (Max Resolution:1920x1080@60Hz)
	AV IN	1920x1080@60HZ, Interface:DB15 Input level:, Video: 1±0.1 Vp-p; BNC Interface
USB	x1USB2.0	
Remote Control Interface	RS232	RS232 INRJ45/x1DB9
		RS232 OUTRJ45/x1DB9
Power	Power requirements	100 V ~ 240 V/AC, 50/60 Hz
	Power consumption	95W
	Power consumption in standby mode	<0.5W
Environment	Working Temperature	0°C ~ 40°C
	Working Humidity	20% ~ 85% RH Non-Condensing
	The longest service time (Hour×Day)	24 Hours×7 days
Structure	Net Weight	21.9±1.5KG
	Gross Weight	51.1±1.5KG(double box packing)
	Product Size(mm) (W x D x H)	1077.58mmx113.65mmx607.8mm
	Package Size)(W x D x H)	1245mmx348mmx783mm (Double Box Packing)
	Housing Material	Sheet Metal
	Housing Color	Black
	VESA	12-M6 Screw hole 600mmx400mm
Language	OSD	English/Chinese