

RG-EAP602

**High-Power Outdoor Omnidirectional
Dual-Band Wireless Access Point**

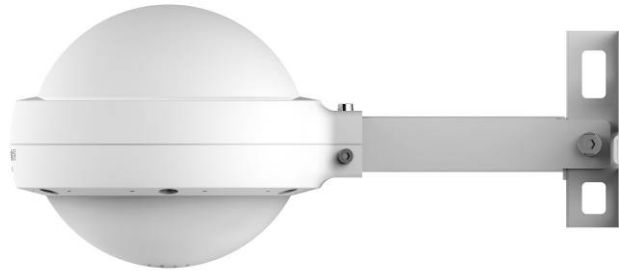
Datasheet

V1.0

C o n t e n t s

1	Product Photos.....	1
2	Product Overview.....	2
3	Product Features.....	3
4	Technical Specifications.....	6
5	Ordering Information.....	8

1 Product Photos



RG-EAP602

2 Product Overview

Ruijie Reyee Series RG-EAP602 is a high-power outdoor omnidirectional dual-band wireless access point supporting 802.11b/g/n/ac, which is designed for villages, villas, parks, scenic spots, plazas, etc. With concurrent 2.4GHz and 5GHz, the AP supports dual-band dual-stream MIMO technology, which can provide 300Mbps at 2.4GHz, 867Mbps at 5GHz and up to 1167Mbps per AP. The built-in omnidirectional high-gain antennas provide excellent coverage for the users.

With the exquisite spherical design, the RG-EAP602 adopts an IP67 enclosure, which is suitable for deployment in harsh outdoor environments. It can withstand extreme outdoor weather and other environmental conditions, which is highly adaptive to the cold weather in northern China and humid weather in southern China. The separate mounting bracket installation greatly reduces the difficulty of installation and maintenance. RG-EAP602 supports 802.3af/at PoE and DC12V local power supply. The 2 gigabit Ethernet ports can directly connect to cameras or cascade switches, which greatly enriches the outdoor networking solutions and application scenarios.

As a wireless access point in the Real-easy Series, RG-EAP102 supports the Real-easy smart networking features, which realizes auto-discovery, auto-networking and auto-configuration of devices without the need for controllers or Internet access. With the mobile app, users can quickly complete the device deployment and configuration, remote management, operation and maintenance of the entire network, which greatly reduces the investment of equipment cost, labor cost and time cost in the process of wireless network construction. Users can perform comprehensive local management or remote management of the equipment in the entire network via the mobile app, web management, MACC cloud platform, gateway, etc. Users can also share the network to third party for collaborative management, thereby offering a simpler, easier to use, more secure and convenient enterprise network.

3 Product Features

Separate mounting bracket installation

With the separate mounting bracket installation, equipment installation can be completed quickly in two steps, reducing the difficulty of working at heights.

Step 1: Fix the sheet metal bracket to the wall with expansion screws, or fix it to the pole with pole clamps.

Step 2: Insert the AP into the slot of the sheet metal bracket and fix it with screws.

Dual power supply

RG-EAP602 supports 802.3af/at PoE and DC12V local power supply. The two power supply modes can be connected concurrently to offer power redundancy, avoiding power failure caused by lightning damage to the power supply and greatly improving outdoor operation reliability.

Dual Ethernet ports

The 2 gigabit Ethernet ports can directly connect to cameras or cascade switches, which greatly enriches the outdoor networking solutions and application scenarios. The AP is an ideal choice for the hybrid deployment of outdoor wireless coverage and outdoor surveillance.

Smart networking

The AP supports 3 networking modes including gateway management, MACC platform management and smart network management. It can work with Real-easy Series gateways, smart PoE switches and APs for unified discovery, networking, configuration and management. It can also operate under routers or gateways of any brand without hardware controller, thereby reducing the cost of network construction or transformation.

Guided by the Real-easy app, users can quickly complete the deployment and configuration of the equipment in the entire network within three minutes. Users can perform comprehensive local management or remote management of the equipment in the entire network via the mobile app, web management, MACC platform, gateway, etc. Users can also share the network to third party for collaborative management.

High-performance wireless access

RG-EAP602 supports 802.11n@2.4GHz and 802.11ac@5GHz, offering access rate of 300Mbps at 2.4Ghz, 867Mbps at 5GHz and up to 1167Mbps per AP. The superior wireless performance greatly optimizes the wireless users' network experience. The 164 maximum concurrent clients and up to 300m coverage radius also significantly improve the deployment result of outdoor wireless scenarios.

Excellent environmental adaptability

RG-EAP602 offers an IP67-rated enclosure that fulfills waterproof, dustproof, damp-proof and flame-retardant requirements to withstand harsh environments such as wind erosion, rain and high humidity. The features greatly lengthen the equipment life span and effectively reduce the maintenance cost.

The industrial-grade components and enclosure can withstand a wide temperature range from -30°C to 65°C without any influence on the stability and life span, which is very suitable for the harsh outdoor environments including the cold weather in northern China and humid weather in southern China.

AI network optimization

Intelligent network management and optimization can be achieved through artificial intelligence, including but not limited to:

- Automatically recognize and add the new equipment to the network
- Automatically avoid WAN address conflict
- Smart network topology display and diagnosis

- Network optimization and radio frequency adjustment

4 Technical Specifications

Hardware specifications	
Model	RG-EAP602
Radio	2.4GHz & 5GHz dual-band dual-stream
Protocol	2.4GHz: 802.11 b/g/n; 5GHz: 802.11a/b/g/n/ac
Spatial Streams	2.4GHz: 2 Spatial Streams, 2x2 MIMO 5GHz: 2 Spatial Streams, 2x2 MIMO
Max Throughput	2.4GHz: 300Mbps 5GHz: 867Mbps Up to 1167Mbps per AP
Transmit Power	≤500mw (27dBm, RF transmit power only)
Dimensions	200mm*220mm*166mm (excluding mounting kits)
Weight	1kg (excluding mounting kits)
Service Ports	2 10/100/1000Mbps Ethernet ports (one of which supports 802.3af/at PoE) 1 reset button
Reset	1 DC 12V power socket
LED Indicators	Wi-Fi indicator, warning indicator, LAN1 connection indicator, LAN2 connection indicator
Power Supply	802.3af / 802.3at DC 12V 1.5A
Built-in Antennas	Built-in omnidirectional antennas (basic gain 3dBi)
Power Consumption	<12.95W
Coverage Radius	Open and unobstructed direction: 2.4G 100m, 5G 300m (the actual coverage distance may vary according to different obstruction situations and different performances of wireless terminals)
Surge Protection	6000V
IP Rating	Above IP67
Environment	Operating temperature: -30° C~65° C
	Storage temperature: -40° C~85° C
	Operating humidity: 0%~100% (non-condensing)
	Storage humidity: 0%~100% (non-condensing)
MTBF	>250000H
Software Features	

WLAN	Maximum number of clients: 164
	Recommended number of clients: 96
	Up to 8 SSIDs
	Support SSID hiding Configuring the authentication mode, encryption mechanism, and VLAN attributes for each SSID
	SSID-based and radio-based STA limit
	Support Layer 2 user isolation
Security	Support PSK authentication
	Support static blacklist and whitelist
	Support WPA (TKIP), WPA2 (AES), and WPA-PSK data encryption
Routing	Support static IP address and DHCP
Management and maintenance	Support local or remote management with app Support local management with web Support remote management with MACC platform
Platform management features	Automatic RF adjustment via the platform
	Unified configuration via the platform
	Unified monitoring via the platform

5 Ordering Information

Model	Description
RG-EAP602	802.11ac Wave2 high-power outdoor omnidirectional dual-band wireless access point, built-in high-gain omnidirectional antennas, maximum access rate: 300Mbps+867Mbps, support 802.11a/b/g/n/ac, DC power supply and PoE (DC power adapter or PoE power module are sold separately)