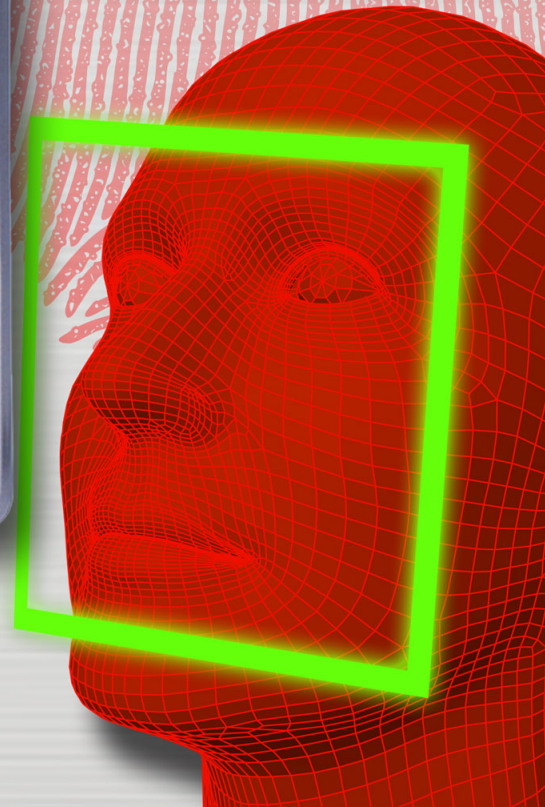
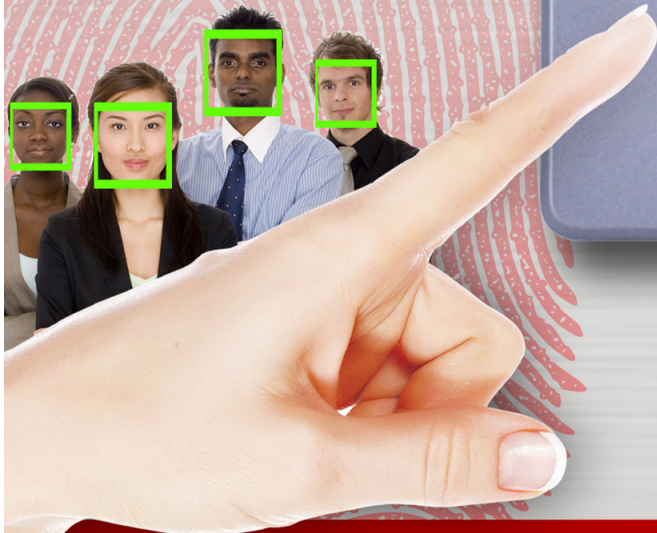


### ANALYSIS



10011 100101 1 1 0 0  
1010 011 010 01 01 1  
00 011110101 101101011  
1 10 1 101 0 0101 0  
11 11011 0 011000101  
0 0 111 10101 01  
101 1 10 0 0100110 0  
0101101 101010 1 0 011  
011 0 1 110 000 1 0



# HDC-N43000







## Specifications

Model	HDC-N43000
Facial capacity	300
Fingerprint capacity	3000
Storage Capacity	200000
Identification mode	Fingerprint, facial, password,
Recognition ways	1: N, 1: 1
Facial Recognition speed	≤1s
Fingerprint Recognition Speed	0.7s
FAR	≤0.0001%
FRR	≤0.01%
Standard Function	USB2.0 exempt drive ,TCP/IP,BS
OS	Linux
Hardware Platform	Atmel 400MHz
Keyboard	4*4 keyboard
Size of machine	190x80x30mm.
Master Chip	Atmel 9G25
Alarm function	Intimidation alarm, tamper alarm, forced door-opening alarm, door-opening overtime alarm, entrance point alarm
Lock output	NO/NC
Weigand out and in	Yes
Door open button	Both normal button and wireless remote control
Use distance	30-80cm
Optional function	1. Fingerprint capacity: 5000/10000 2. Facial capacity: 1000/2000 3. WIFI 4. Wireless lock function

## Feature

- Professional fingerprint and facial access control machine
- The integrated access control machine connecting with facial, fingerprint and password
- The CPU is Atmel 9G25
- High identifying speeds and accuracy
- Fluidly switch between BS and CS
- Linux OS
- Interface and voice of the machine can be freely switched
- Multi optional function

